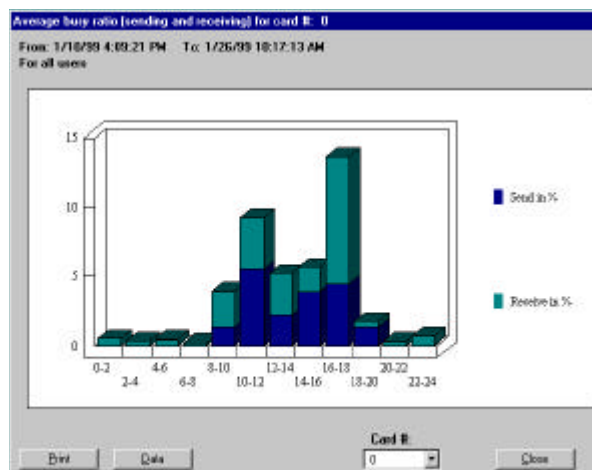


# Imecom Group's DM Statistics Module

Imecom's Document Messaging Statistics Module provides full monitoring and tracking of all fax traffic, and provides complete information to aid the Fax Administrator to assure there is sufficient line capacity to handle incoming and outgoing fax traffic. DM Statistics is most valuable in a networking and e-mail environment, where it can provide detailed logs at the individual user, departmental and company level. When used in conjunction with Imecom's Fax Mailing or Broadcasting features, DM Statistics will sort out all failed transmissions from a given fax mailing, and provide an at-a-glance report for follow-up. When your fax is a critical means of communicating with customers, the Statistics module will determine during what periods and for what percentage of the time the fax lines are busy.



The Statistics Module also makes it possible for users to break down logs to the individual transaction level for chargeback purposes (i.e., by recipient fax number and chargeback codes) or to calculate the allocation of total fax costs. Reports generated by the Statistics Module include tables and graphs, which can be imported into documents generated with word processors for fax accounting and administrative purposes.

## Functionality

- Summary statistics for all fax transmission and reception, including % sent and received successfully, the % that failed for any reason and the % canceled.
- A complete breakdown of network logs by individual user.
- Line Available to Total Time ratio, including peaks reached during the day.
- Sorting of logs by chargeback code, recipient, chronological order, transmission status ...
- Extraction from logs of all failed transmissions, or all successful transmissions for additional analysis
- Results can be displayed, printed and/or saved as comma de-limited text files.



8 Governor Wentworth Hwy. Wolfeboro, NH 03894  
Tel: 1.603.569.0600. 800.329.9099 Fax: 1.603.569.0609

[www.faxresource.com](http://www.faxresource.com)

[ieisales@faxresource.com](mailto:ieisales@faxresource.com)

