

# IMECOM DM FAX SERVER FOR NOVELL GROUPWISE

Integrates desktop faxing with Novell GroupWise and NDS/eDirectory to provide a complete unified fax and email solution

DATASHEET

## OVERVIEW

**DM Fax Server for Novell GroupWise**, part of the Use it Messaging Suite, seamlessly integrates desktop faxing into Novell GroupWise, enabling end users to send and receive faxes using their GroupWise email client or GroupWise Web Access (GWA). With DM Fax Server for Novell GroupWise, there is no client software or add-ins to rollout, making initial deployment quick and simple.

DM Fax Server for Novell GroupWise integrates tightly with Novell NDS/eDirectory Directory. User accounts and user account information can be leveraged right from eDirectory, negating the need to create and manage separate user accounts on the DM Fax Server or perform unnecessary synchronization processes.

Inbound faxes received by DM Fax Server can be routed right to GroupWise user inboxes or distribution lists as email messages with PDF or TIF file attachments. Inbound Automatic Forwarding Rules give you total flexibility and control over inbound fax processing and routing. You can tailor inbound routing to meet your specific needs and requirements using DID, DNIS, DTMF, inbound fax line, date/time, page count, CSID, and more.

## FEATURES

- Supports Novell GroupWise versions 8, 7, 6, and 5
- Supports Microsoft Office Outlook 2010, 2007, 2003, 2000, 9x and other SMTP-based email clients
- Support for Microsoft Windows Server 2008/2003/2000 32-bit and 64-bit Editions
- Send, receive, and manage faxes right from GroupWise Mail. Organize and respond to your faxes in the same way and from the same place as emails
- Seamless integration with GroupWise Mail - no client software or forms to install
- Compose and send faxes using GroupWise Mail or any desktop application, i.e. Microsoft Office, Open Office, etc.
- Receive faxes in your inbox as PDF or TIFF attachments
- Minimal-to-no user training required
- Supports GroupWise Web Access (GWA)
- Fax delivery confirmations
- Store and manage fax recipients in your GroupWise Address Books
- eDirectory integration allows user management to remain centralized
- LDAP connectivity to eDirectory for cover page population and assignment, as well as user rights management
- Minimize the load on your GroupWise Server by sending email notifications with "links" to fax files stored in a secure location on the DM Fax Server or elsewhere on your network (requires DM File Connector)
- Interface with GroupWise Internet Agent (GWIA) and use simple SMTP-style fax addressing

## ABOUT IMECOM GROUP

Imecom Group began developing and selling fax server software and image conversion/printer driver software in 1989. Headquartered in New Hampshire, Imecom Group presently supports over 12,000 solutions in 62+ countries, and we're growing fast. As we continue to reach new technology levels, one thing remains constant: excellent customer support. Imecom Group maintains the highest quality level of customer support services in our market. It is one of the many reasons companies such as Alticor, Sears, Cigna, Johnson & Johnson Healthcare, Cerner, and others choose to implement our technology. We do not, and will not, forget that it is our customers who help us be successful.

Imecom Group's main products and solution include the DM Fax Server, part of the Use it Messaging product family, and Print-2-Image. DM Fax Server is a true enterprise network fax server solution that offers desktop faxing, email to fax and fax to email capabilities, and numerous fax and e-document delivery integrations for everyday applications. Print-2-Image is a robust image conversion software solution that functions like a printer and provides fast, high-quality image rendering.

Imecom Group's products and support services introduce newer, more efficient ways to process, deliver, and receive mission-critical information, resulting in improved productivity and increased cost savings.

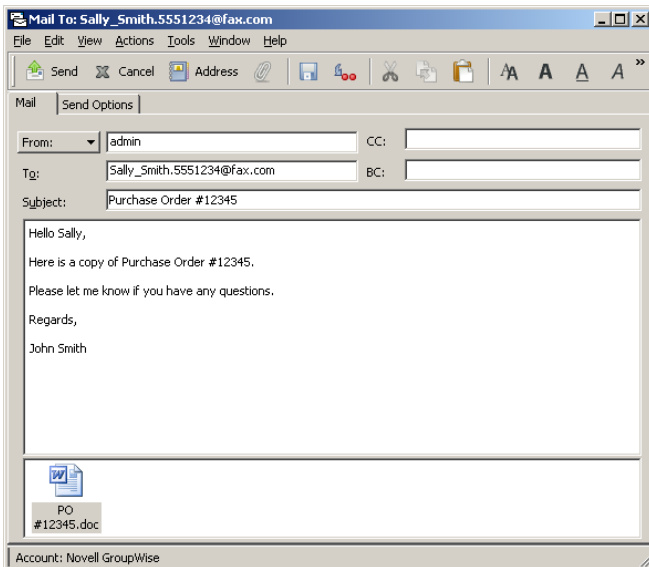


## HOW DOES IT WORK?

### Sending Faxes

With DM Fax Server for Novell GroupWise, users can compose and send fax messages right from their GroupWise Mail client or GroupWise Web Access as they would regular emails. Fax messages can be addressed to one or multiple recipients automatically using GroupWise Address Books or manually by entering the FSMTP-style fax addressing.

When a user sends a fax from GroupWise, the message is routed through Novell GroupWise (GWIA) to the DM Fax Server. DM Fax Server then takes the message (including any attachments), automatically adds a cover page and fills in all the available fields, renders the whole job to fax format, and transmits it over phone lines, your LAN/WAN, or over the Internet (VoIP).

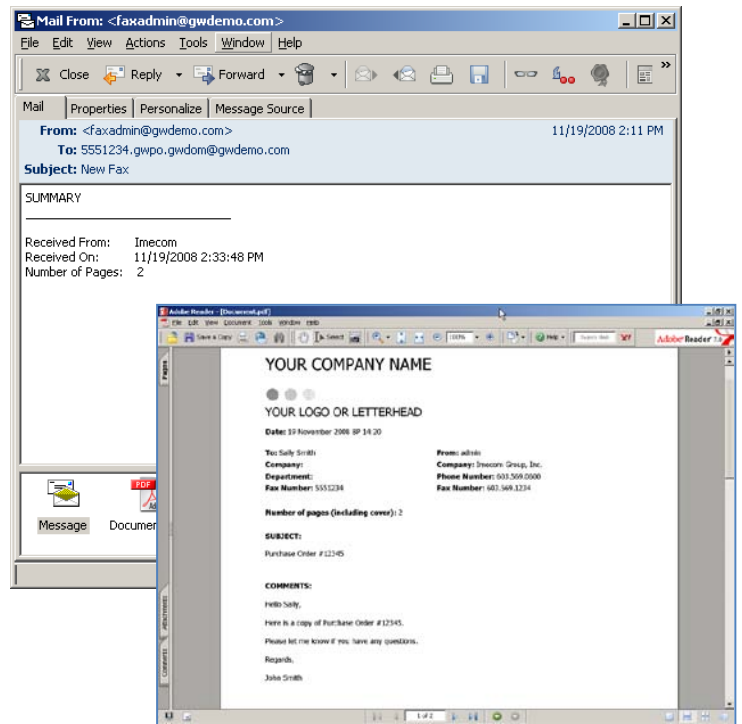


### Receiving Faxes

DM Fax Server for Novell GroupWise automatically routes inbound faxes to GroupWise mailboxes as email messages with PDF or TIF file attachments. You can design inbound fax notification messages so that users can quickly and easily identify fax messages, and can include dynamic information such as CSID, date, and page count within the notification email.

You can specify what attachment format to use for routing inbound faxes – TIF or PDF. Or, if you are concerned about storage capacity on your GroupWise Server, you can send an email notification with a link to an alternate secure location where the fax file is stored (requires DM File Connector).

DM Fax Server supports a number of inbound routing criteria, including DID, DNIS, DTMF, CSID, inbound fax line, date/time, page count, and more. In addition to routing inbound faxes to GroupWise mailboxes, DM Fax Server can also route faxes to printers, network folders (requires DM File Connector), web servers, and databases.

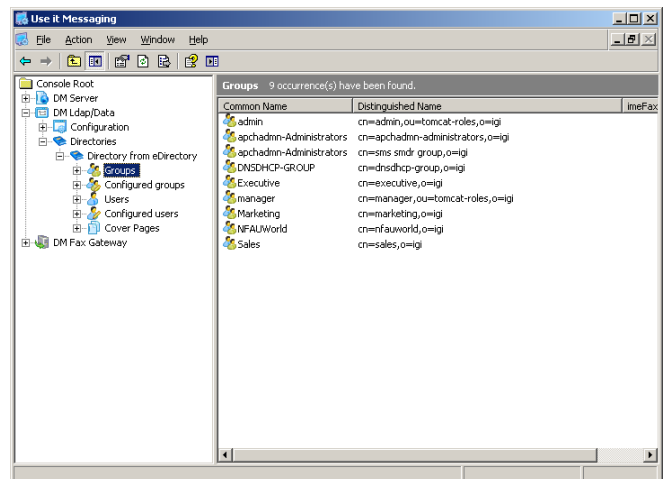


### Novell NDS/eDirectory Integration

The DM Fax Server for Novell GroupWise leverages existing user accounts and user account information right from eDirectory. As a result, you will not have to waste time and resources creating and maintaining a separate database of fax users on the DM Fax Server, nor will you have to worry about unnecessary synchronization processes. All user and fax DID management remains centralized in eDirectory and can be performed using ConsoleOne.

### LDAP Connectivity

The DM Fax Server includes the DM LDAP/Data Connector which enables you to connect to your main network directory for populating, assigning, and managing fax cover pages, as well as controlling user permissions. With DM LDAP, cover page selection and population is dynamic and based on your network directory structure.



## System Requirements

### DM FAX SERVER HARDWARE REQUIREMENTS

Recommended	Minimum
<ul style="list-style-type: none"> <li>Intel Pentium IV (or equivalent) 2GHz Processor</li> <li>1 GB RAM</li> <li>40 GB Hard Disk</li> <li>Network Interface Card (NIC)</li> <li>VGA adapter and monitor</li> <li>CD-ROM Drive</li> </ul>	<ul style="list-style-type: none"> <li>Intel Pentium III (or equivalent) 500MHz Processor</li> <li>512 MB RAM</li> <li>20 GB Hard Disk</li> <li>Network Interface Card (NIC)</li> <li>VGA adapter and monitor</li> <li>CD-ROM Drive</li> </ul>

### SUPPORTED OPERATING SYSTEMS

DM Fax Server – Server Software	DM Fax Server – Client Applications
<ul style="list-style-type: none"> <li>Windows Server 2008 Enterprise Edition (x32 and x64)</li> <li>Windows Server 2008 Standard Edition (x32 and x64)</li> <li>Windows Server 2008 Cluster (x32 and x64)</li> <li>Windows Server 2003 Enterprise Edition (x32 and x64)</li> <li>Windows Server 2003 Standard Edition (x32 and x64)</li> <li>Windows Server 2003 Cluster (x32 and x64)</li> <li>Windows 2000 Advanced Server</li> <li>Windows 2000 Server</li> </ul>	<ul style="list-style-type: none"> <li>Windows 7 (x32 and x64)</li> <li>Windows Vista (x32 and x64)</li> <li>Windows XP Professional SP2 (x32 and x64)</li> <li>Windows 2000 Professional SP2</li> </ul>

### VMWARE \*

Dialogic Brooktrout SR140	VMware
<ul style="list-style-type: none"> <li>SR140 SDK 5.1.3 or later (TR1034 is not compatible with VMware at this time)</li> <li>VMware ESX Server version 3.0.1 or later within the 3.0.x product line or ESXi Server 4.0.0 or later using Windows</li> <li>Windows Server 2008 Enterprise &amp; Standard Editions</li> <li>Windows 2003 Enterprise Edition, Service Pack 2</li> <li>Windows 2003 Standard Edition, Service Pack 2</li> <li>Windows 2000, Service Pack 4</li> </ul>	<p>The VMware virtual environment created for SR140 must meet SR140 minimum requirements as well as the minimum processor emulated by VMware, which is the Xeon processor. Therefore, the minimum requirements of the virtual machine presented to SR140 are:</p> <ul style="list-style-type: none"> <li>Single Xeon Processor - 2 GHz</li> <li>512 MB memory</li> </ul> <p>This results in approximately 15% CPU utilization when running 120 simultaneous SR140 faxes.</p>
<p>* The Dialogic Brooktrout SR140 must be used in order to run the DM Fax Server on a VMware platform. Traditional PCI-based fax cards are not supported.</p>	

### SUPPORTED FAX BOARD PRODUCTS

Dialogic Brooktrout
<ul style="list-style-type: none"> <li>TR1034 Series - T1, PRI, E1, BRI, Analog, and Analog DID fax boards</li> <li>SR140 Series - "Boardless" fax board software</li> <li>TruFax Series - Analog fax boards</li> </ul>