



# **DM FAX SERVER WITH DESKTOP FAX CLIENT**

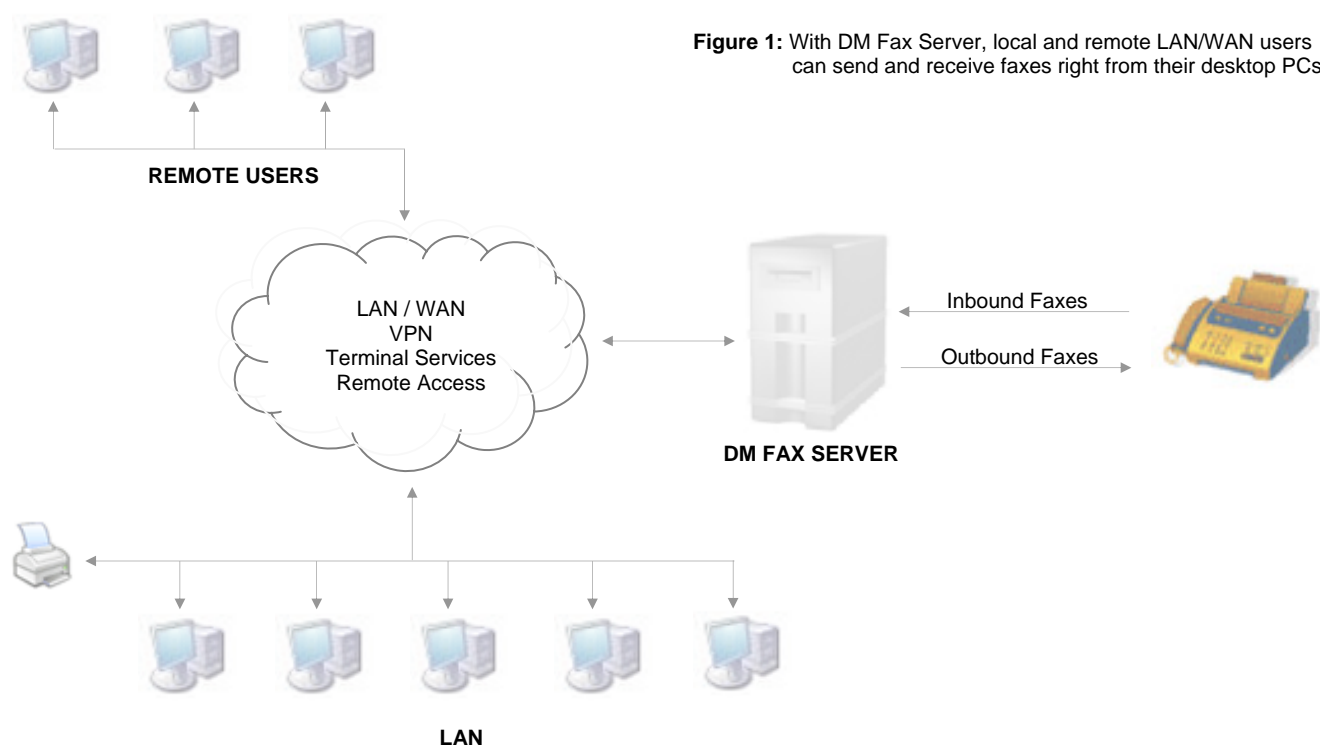
PRODUCT DATASHEET

## DM Fax Server™ With Desktop Fax Client

Send, receive, and manage electronic faxes right from individual desktop PCs and everyday business applications.

### OVERVIEW

DM Fax Server from Imecom Group gives you all the features and capabilities to fax-enable your desktop PCs and all your business applications. DM Fax Server resides on a Windows 2003/2000/NT4 Server, or in some instances a Windows XP Professional or Windows 2000 Professional Workstation. Each end user leverages the resources of the DM Fax Server using Imecom's DM Fax Client software. With the DM Fax Client software, users simply print any document they wish to fax to the Faxil Printer Driver. The document is then converted to TIFF format and the DM Fax Client interface is displayed.



**Figure 1:** With DM Fax Server, local and remote LAN/WAN users can send and receive faxes right from their desktop PCs.

The DM Fax Client software resides on each end-user desktop to provide them with the ability to send and receive faxes without having to leave their desk. Gone are the days of creating cover sheets, printing documents, and walking to and from fax machines. DM Fax Server and the DM Fax Client greatly increase productivity across your organization.

## FEATURES & BENEFITS

- Send, receive, and manage faxes directly from your desktop and everyday business applications
- Send faxes from popular applications such as Microsoft Office, Word Perfect, and Adobe Acrobat just like you would print them
- Receive faxes right to your desktop or automatically to any network printer
- View received faxes using Imecom Group's ShowFax TIFF Viewer – faster and more feature rich than standard Windows Imaging software
- View personal outbound fax transmission queues and logs of sent and received faxes
- Route received faxes to individual user fax client users automatically via DID, OCR, DTMF, CSID, and inbound fax channel
- Create and manage recipients and recipient lists within the DM Fax Client Address Book
- Broadcast faxing to hundreds or thousands of recipients – select recipients or lists directly from the DM Fax Client Address Book
- Scan hard copy documents into electronic format and fax directly from the DM Fax Client

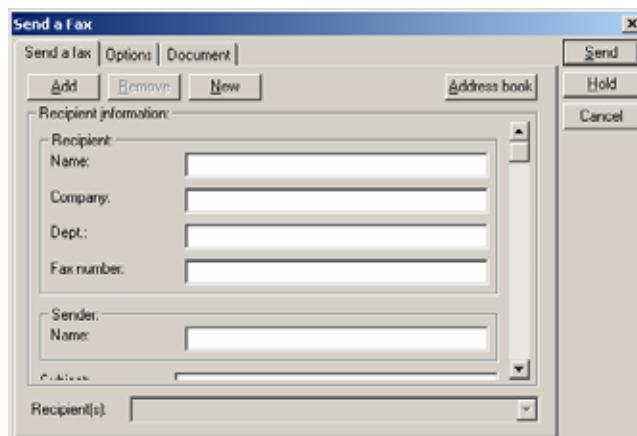
## HOW DOES IT WORK?

Sending faxes from your desktop and from business applications is quite easy. Simply open the document you wish to fax and print it to Imecom Group's Faxil Printer listed in the Windows Printers folder. The DM Fax Client interface will automatically popup and present the end user with various fields and fax options.

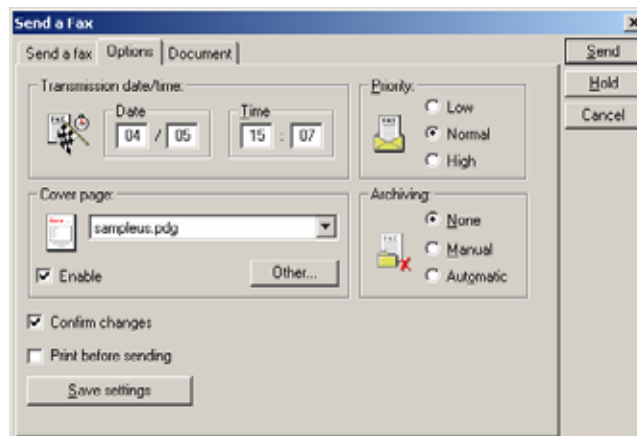
The "Send A Fax" tab of the DM Fax Client displays various information fields to the end user. Such fields include recipient name, company, department, fax number, subject, message note, and so on. The fields that are available in the Send A Fax tab are dependant upon the fields that are available on a fax coversheet.

The "Options" tab of the DM Fax Client displays various options the end user may set on an individual fax job basis. Available options include cover page selection, delayed transmission scheduling, priority, and archival options.

The "Documents" tab of the DM Fax Client displays actual documents to be faxed. For example, if an end user wishes to fax a Microsoft Word document, that document will appear in the Documents tab. Fax coversheets will also appear in this tab.



**Figure 2:** DM Fax Client's "Send A Fax" tab. Information entered into the fields will be placed on the fax coversheet.



**Figure 3:** DM Fax Client's "Options" tab. Here, end users can set specific options for individual fax jobs.

Each DM Fax Client user has personal logs of sent and received faxes. These logs display a list of all faxes that have been sent by the end user, and received to the end user. The information fields available in these logs include the sent/received fax document, the number of pages, the date and time of transmission/reception, the destination or sender information, the transmission status (outbound only), and duration of the transmission/reception.

Document	Pages	Date	Time	Destination	Status	Information
test.doc	2	4/1	16:00	1234	Sent	00' 07"
test.doc	2	4/1	15:58	5678	Sent	00' 08"
test.doc	2	4/1	15:55	Deborah Jones	Sent	00' 05"

Date	Time	Pages	From	Duration	Information
4/1	16:00	2	Imecom Group	00' 06"	OK
4/1	15:58	2	Imecom Group	00' 07"	OK
4/1	15:55	2	Imecom Group	00' 04"	OK

Figure 4: DM Fax Client's "Sent Fax Log" and "Received Faxes Log"

When receiving faxes via the DM Fax Server, all incoming faxes are delivered right to the DM Fax Client of end users. From here, the end user can choose to view the fax, print the fax, route the fax to another fax client user, archive the fax, and delete the fax.

Inbound faxes are forwarded to fax client users manually or automatically. Depending on the requirements of your organization, you may configure DM Fax Server to forward all inbound faxes to a single fax client user, or multiple fax client users simultaneously. Automatic forwarding to individual users is also supported using Direct Inward Dial (DID) numbers, OCR, DTMF tones, CallerID, CSID, and inbound fax channel. In addition to forwarding to fax client users, DM Fax Server also provides forwarding to printers and/or network folders, and offers auto fax back confirmation features as well.

DM Fax Client includes Imecom Group's ShowFax fax viewer. This viewer enables end users to view received faxes with additional options for annotations, addition or deletion of pages, saving faxes, printing faxes, and retransmitting faxes.

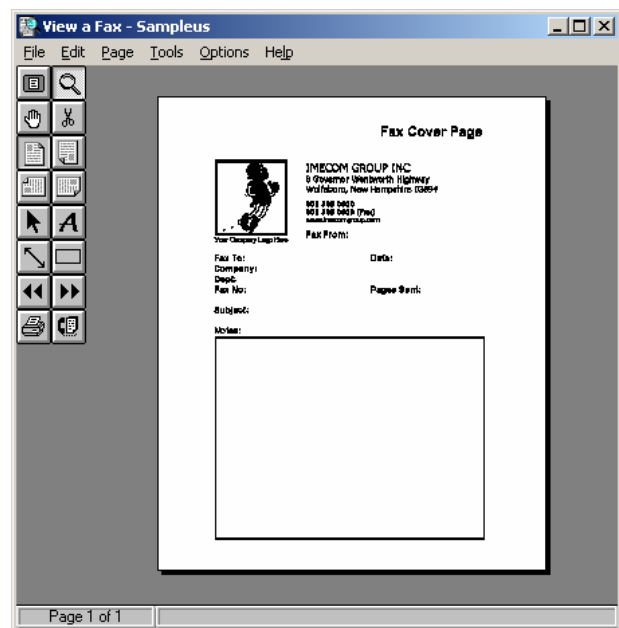


Figure 5: Imecom Group's ShowFax Viewer

## ADMINISTRATION

DM Fax Server and DM Fax Client are managed via the Microsoft Management Console (MMC) associated with the DM Fax Server. By centralizing the management of the entire fax server into one management console, DM Fax Server streamlines routine administrative tasks and eliminates excess processes.

From the DM Fax Server administration MMC, the fax administrator can manage all elements of the fax server, including services, logs, queues, least cost routing and automatic forwarding rules, cover pages, user rights, fax boards, and individual fax lines.

The fax administrator will also be able to choose the database platform on which to store and manage fax server databases. DM Fax Server supports SQL Server, MS Access, or Oracle databases.

DM Fax Client users are managed from the DM Fax Server Admin Console. Here, the fax administrator will create and manage all users that wish to send and receive faxes from their desktop using the DM Fax Client.

The fax administrator has several options available for user management. The administrator will be able to add and delete users, assign certain permission or user types to each user account, set CSID information, create and manage user groups, and restrict users from sending faxes to certain prefixes.

\*Please Note: Creation and management of user accounts within the DM Fax Server Admin Console only pertains to DM Fax Client Users. If a DM Fax Connector for Email is present, user management is done within the domain or network user management system, e.g. Active Directory for Windows 2000/2003 domains.

DM Fax Server may be deployed in a single server configuration, or may be configured in a load-balanced array for redundancy and fault-tolerance. In any case, DM Fax Server supports anywhere from one to hundreds of fax lines, and is fully scalable. Expanding DM Fax Server is as simple as adding another fax board or increasing the channel capacity of an existing fax board.

For more information on desktop fax integration options for Microsoft Exchange, Lotus Notes, Novell GroupWise, or SMTP email systems, please visit [www.imecominc.com](http://www.imecominc.com).

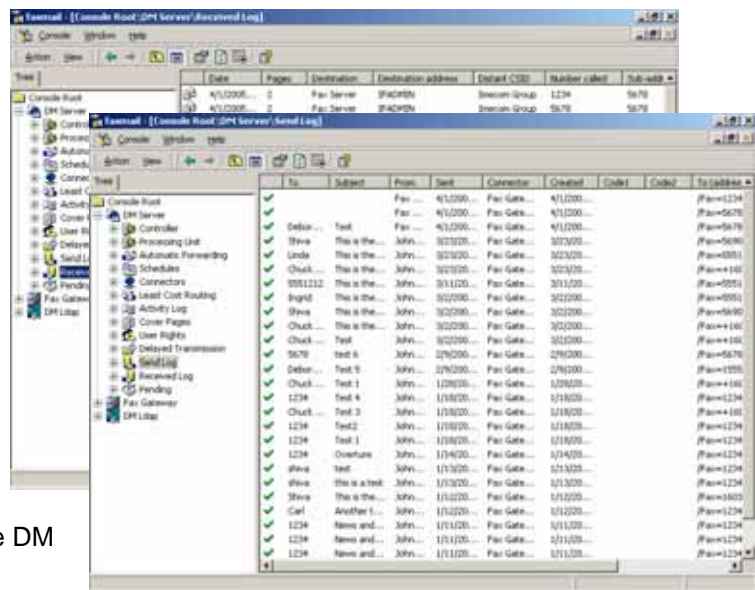


Figure 6: DM Fax Server Administration Console – Logs of all sent and received faxes for entire DM Fax Server system

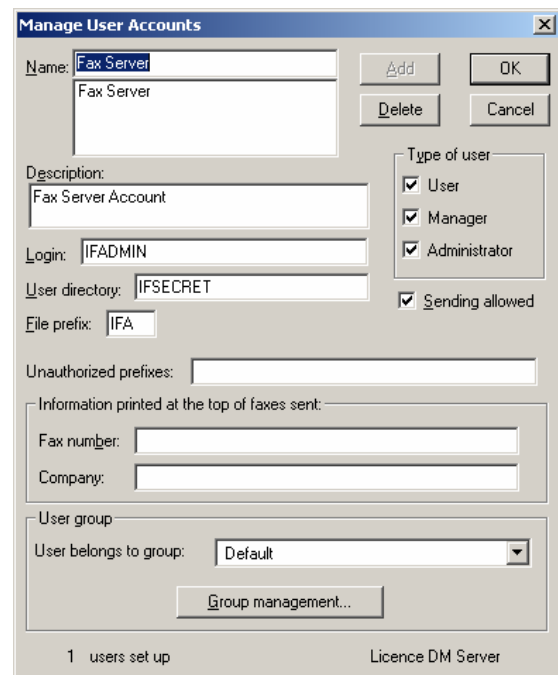


Figure 7: "Manage User Accounts" portion of DM Fax Server Administration Console

**MINIMUM SYSTEM REQUIREMENTS**

- Intel Pentium III (or equivalent) 733 MHz Processor
- 256 MB RAM
- 10 GB Hard Disk
- Network Interface Card (NIC)
- VGA adapter and monitor
- CD-ROM Drive

**OPERATING SYSTEM SUPPORT**

- Windows Server 2003
- Windows 2000 Server or Advanced Server
- Windows NT Server 4.0

**ABOUT IMECOM GROUP, INC.**

Imecom Group is a leading provider of technology solutions and services that enable organizations to integrate and automate the flow of documents and data efficiently, and to secure and protect PCs, information, and applications across the enterprise. Imecom develops, sells, and supports network fax server and image conversion solutions that streamline electronic document processing, delivery, and receipt throughout entire organizations.

Imecom Group, Inc. was founded in 1989 and is headquartered in New Hampshire. Imecom is a member of the Prologue Software Group which is headquartered in France. Together, Imecom Group and Prologue Software Group have established a customer base that includes 2,100 development partners and 5,300 value added resellers, which in turn have established 650,000 installations across the globe. There are now more than 2,200,000 users of Prologue products worldwide.

For more information, please contact us at: [www.imecominc.com](http://www.imecominc.com) or call 1.603.569.0600.

